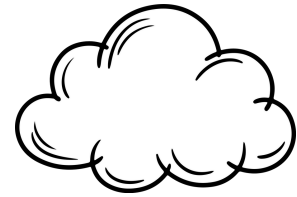
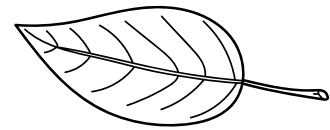


LISTA DEL EXPLORADOR

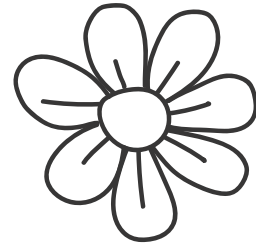
NUBE



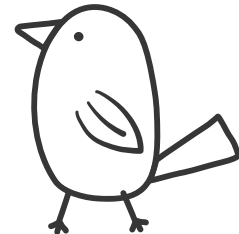
HOJA



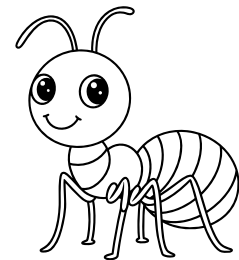
FLOR



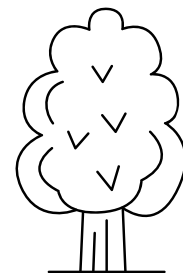
PAJARO



HORMIGA



ARBOL



LISTA DEL EXPLORADOR

SOL



PERRO



MARIPOSA



PIEDRA



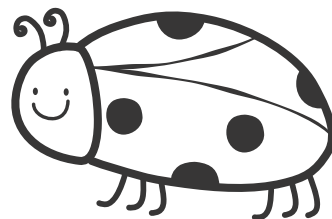
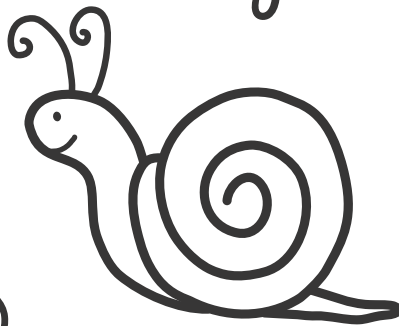
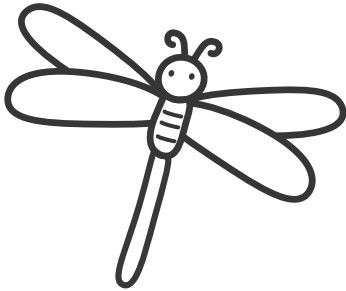
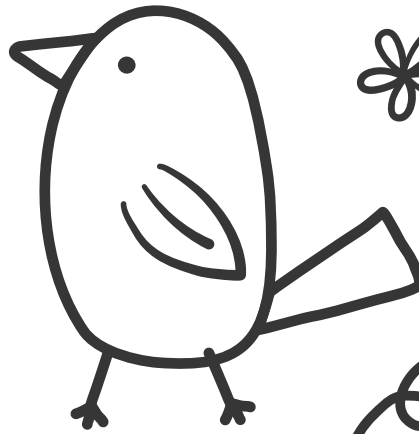
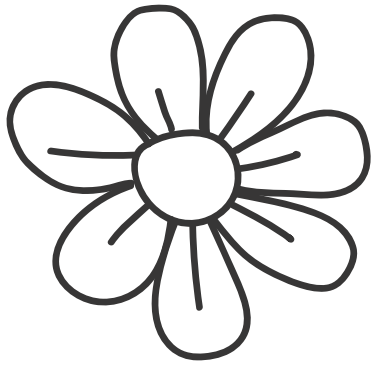
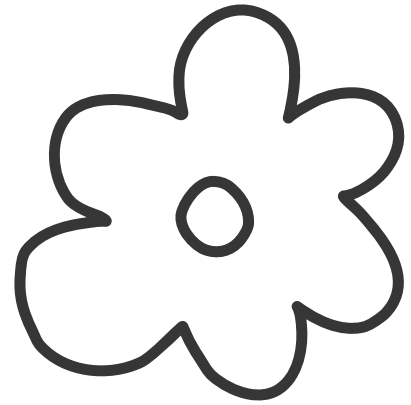
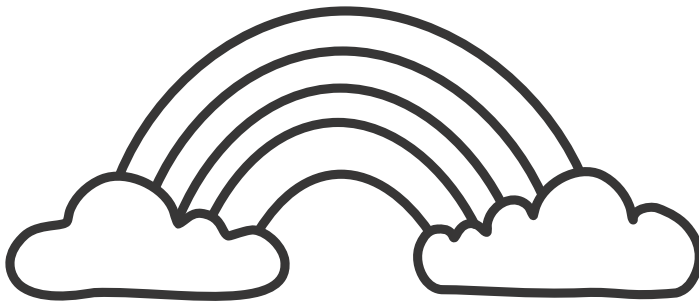
ARCOIRIS



SEMÀFORO



LISTA DEL EXPLORADOR



MAPA DEL TESORO

Encuentra algo verde

Encuentra algo rojo

Encuentra algo rosa

Encuentra algo azul

Encuentra algo amarillo

Encuentra algo morado

Encuentra algo naranja

The map features a central island with a yellow flag on the top left and a red flag on the bottom right. The island is divided into six colored circles, each with a corresponding search prompt. The circles are: a green circle (top left), a red circle (top right), a pink circle (middle left), a blue circle (middle right), a yellow circle (bottom left), and a purple circle (bottom right). The island also contains illustrations of a pile of rocks, a forest of trees, and a compass rose in the bottom right corner.